



Long Creek School District

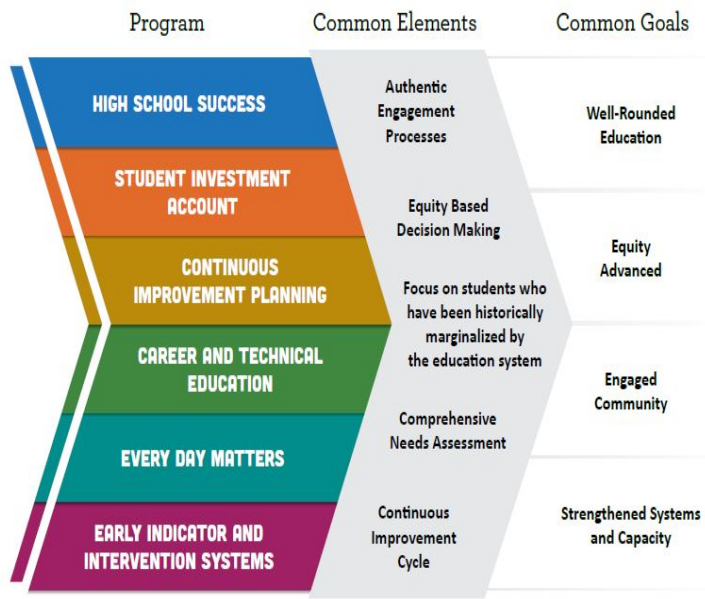
2025-27 Integrated Application

Background

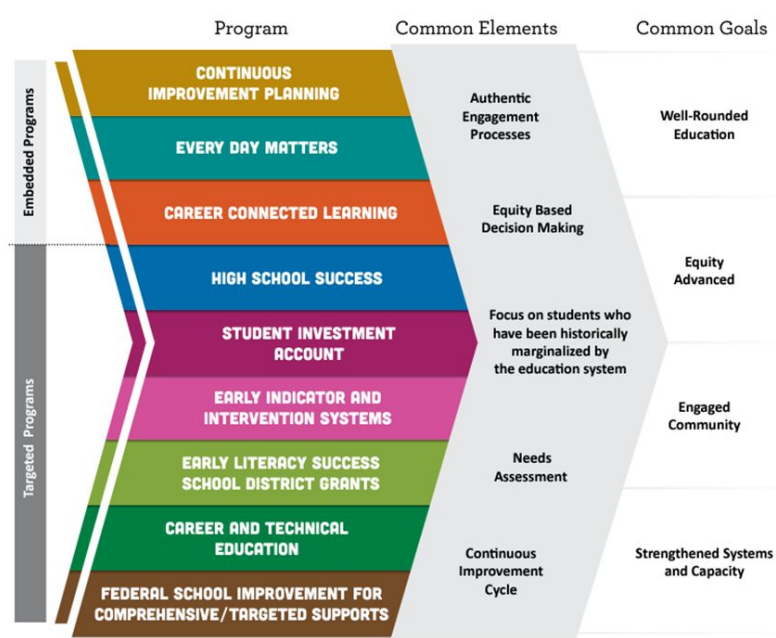
- Integration effort was responsive to requests from educational leaders and state legislators
- Combined processes for community engagement, needs assessment, planning, budgeting and evaluation for nine programs
- Designed to reduce burden and redundancies and improve the framework by which progress can be measured over time

Programs & Common Goals

2023/25 Biennium



2025/27 Biennium



Summary of Program Purposes

High School Success (HSS) - Systems to improve graduation rates and college/career readiness.

Student Investment Account (SIA) - To meet students' mental health, behavioral needs and increase academic achievement/reduce disparities for student focal groups.

Early Literacy Success School District Grants (ELGSSG) - Grants to school districts in order to Increase early literacy for children from birth to third grade, reduce literacy academic disparities for student groups that have historically experienced academic disparities, increase support to parents and guardians around literacy, and to increase access to early literacy learning through support that is research-aligned, culturally responsive, student-centered and family-centered.

Early Indicator and Intervention System (EIS) - The development of a data collection and analysis system, in which educators collaborate, to identify supports for students.

Community Engagement/Needs Assessment Highlights

What we see through survey engagement

- Continue what is working
 - Counseling
 - Student Supports
 - Community Engagement
- Constructive
 - More Opportunities
 - Engaging Classes

These priorities emerged:

- Continue Intervention Support
- Continue Counseling Services
- Support Opportunities
- More Opportunities for Staff PD
- Community Engagement

[Link to Application](#)

Our intended outcomes are:

- A. All Students' social and emotional needs are supported**
- B. Create a well-rounded education for students that enhances class options and opportunities, and after-school opportunities**
- C. A system and culture is established where the school is the nucleus of the community and fosters ongoing community engagement, and develops a strong positive culture with the school and community**
- D. K–3 students will demonstrate increased proficiency in early literacy skills**

These key strategies will help us achieve our intended outcomes:

- Identify and address student social, emotional, and behavioral needs
- Continued investment in curriculum and class electives to enhance classes to create new options for students through CTE
- Invest in professional development opportunities for staff to create high quality educators
- Provide for school and community events with a safe and equipped location to provide educational and social events.

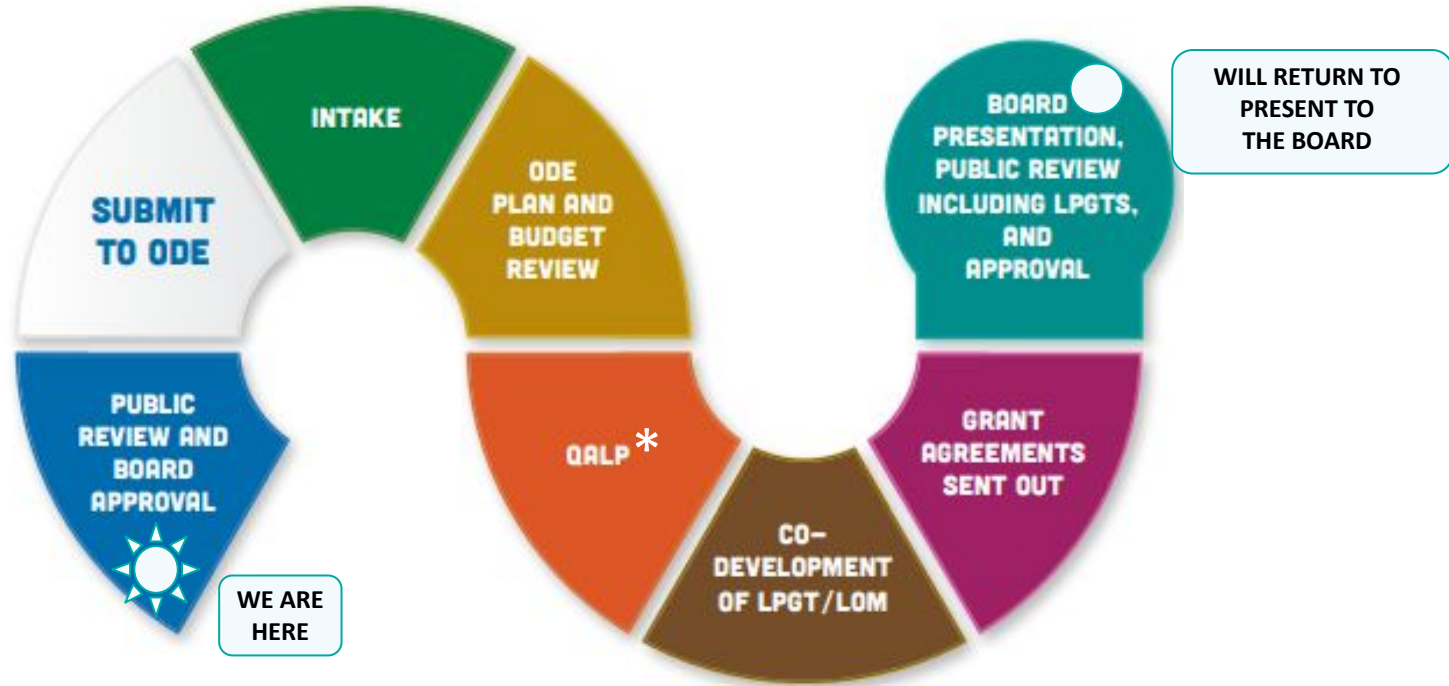
Key Investments:

Program Amounts				
SIA	HSS	Early Literacy	EIIS	Total
\$87,692.41	\$30,817.65	\$62,546.20	\$54.45	181,110.71

- Moving Early Elementary Salary to Early Literacy
- School Counselor
- Media Specialist
- Technology Upgrades
- Extra Opportunities for Students & Enhancing Class Opportunities
- Staff PD

[Link to Full Budget Spreadsheet](#)

What Happens Next?



Questions & Comments
